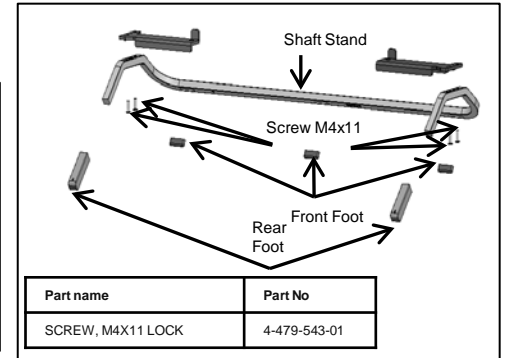
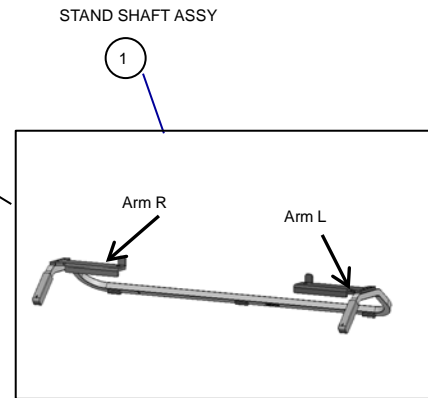
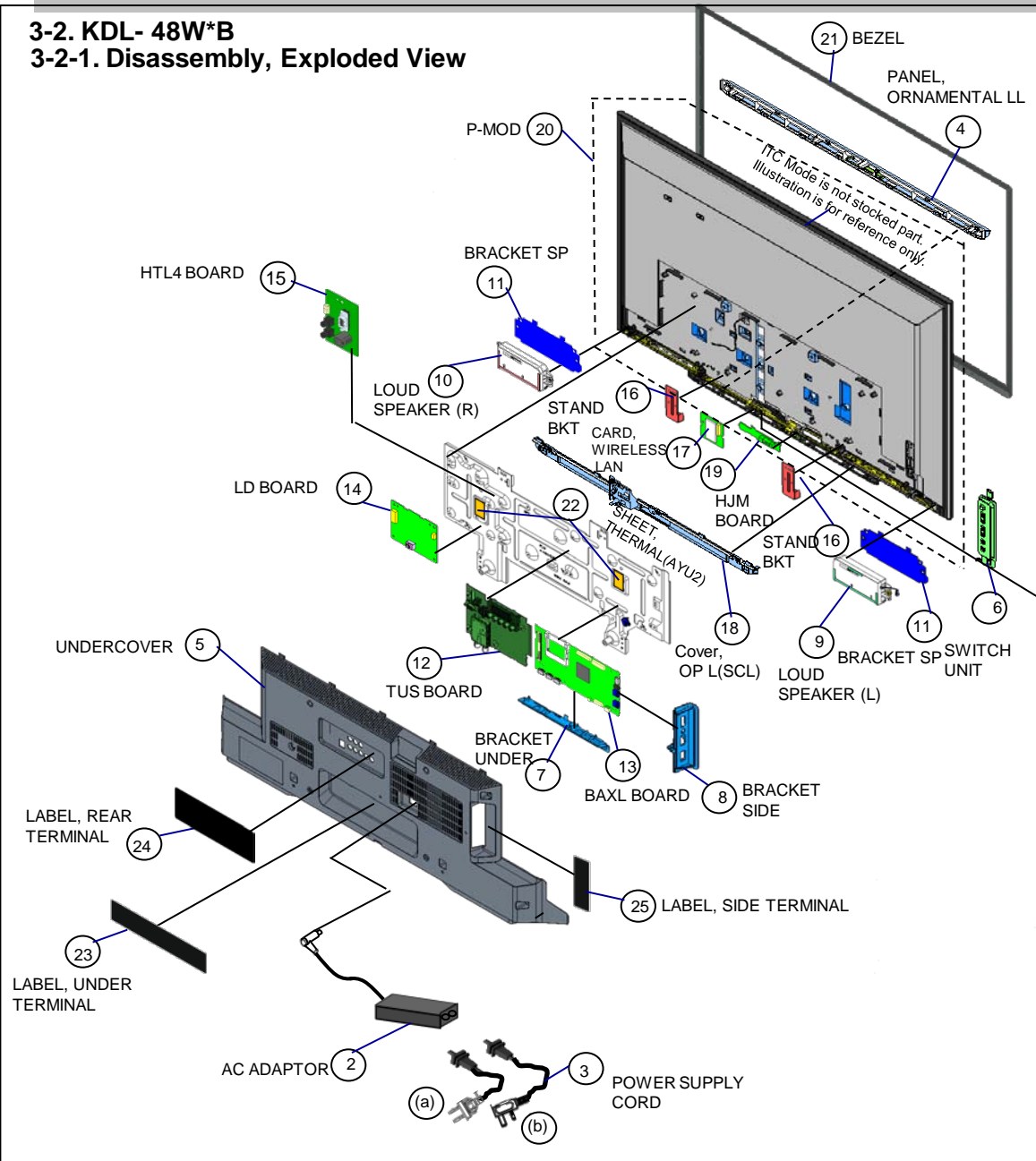
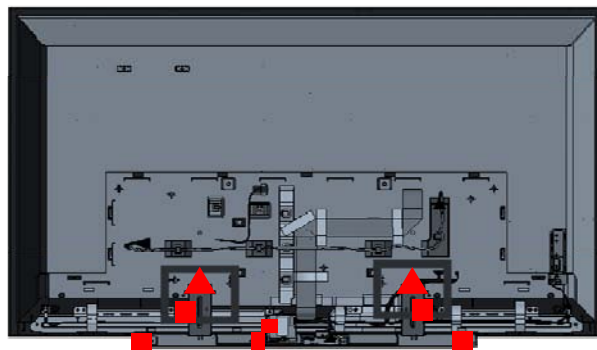
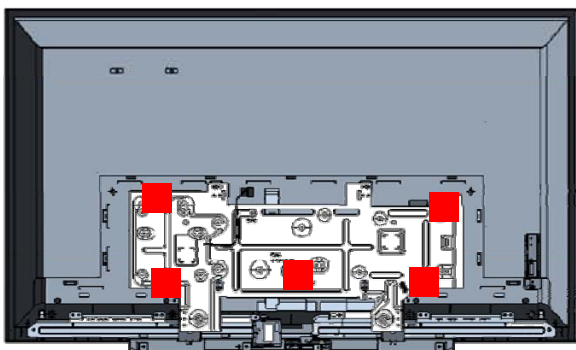
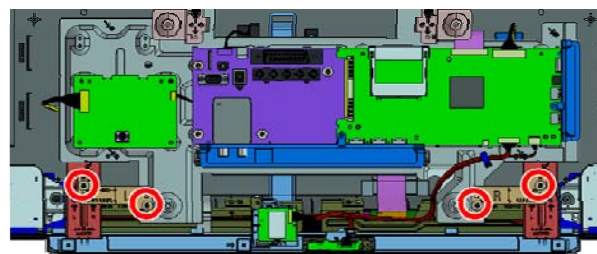
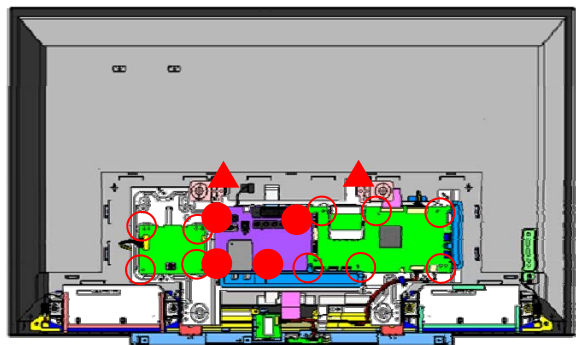
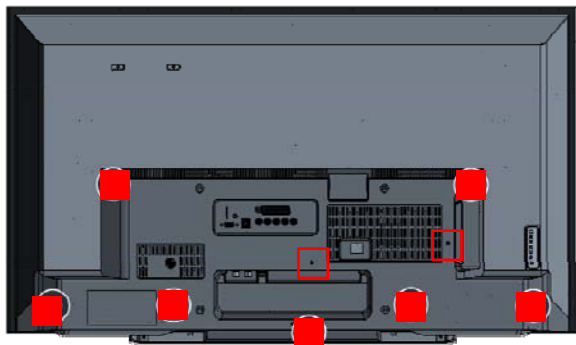


**3-2. KDL- 48W\*B**  
**3-2-1. Disassembly, Exploded View**

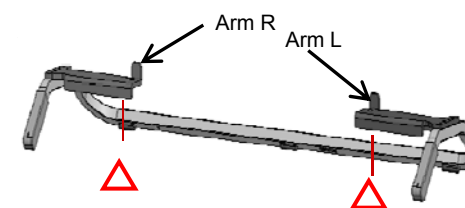


### 3-2. KDL- 48W\*B

#### 3-2-2. Screws



Ref	Part No	Description
■	7-685-647-79	SCREW +BVTP 3X10 TYPE2 IT-3
□	2-580-639-01	SCREW, +BVTP 4X12 TYPE2 IT-3
●	4-256-393-01	SCREW, +PSW M3X6 W12
○	2-990-421-41	SCREW (+PSW) (M3X6)
▲	4-159-298-01	SCREW, +PSW M4X10
△	3-452-815-21 *Please order 4-528-480-01 (Bag Screw Assy)	SCREW, +PSW M5X20



STAND SHAFT

**3-2. KDL- 48W\*B**

**3-2-3. Connectors**

